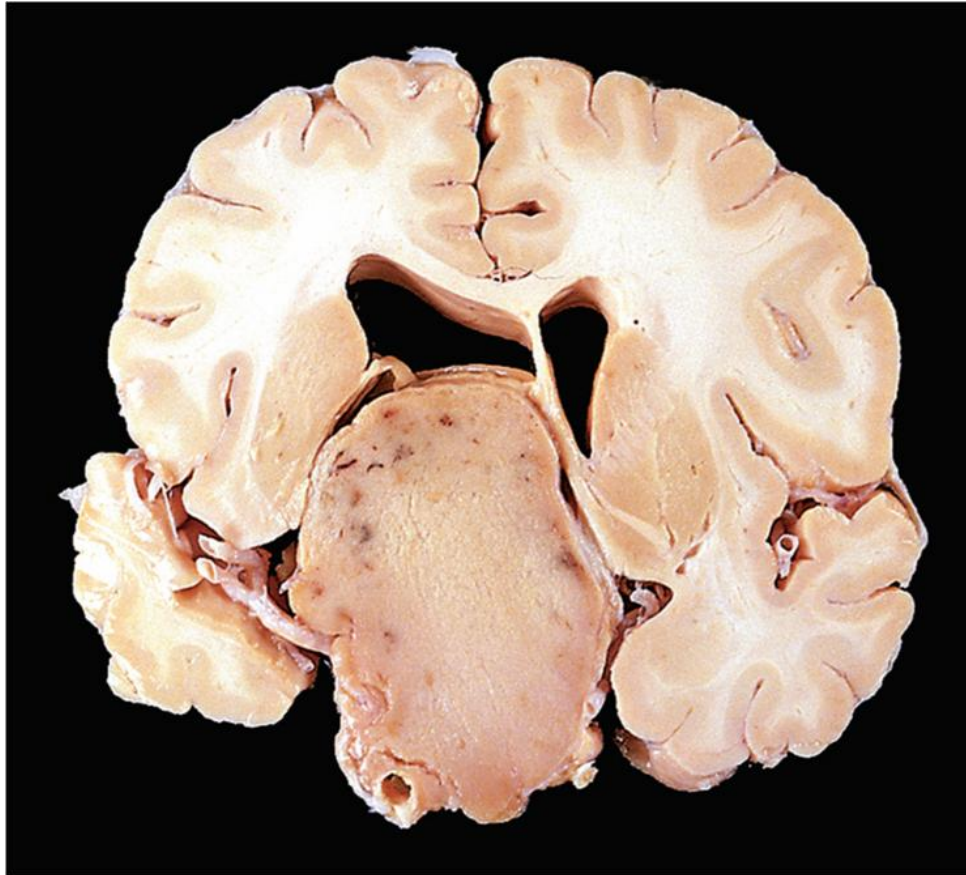


Endocrine lab 2017

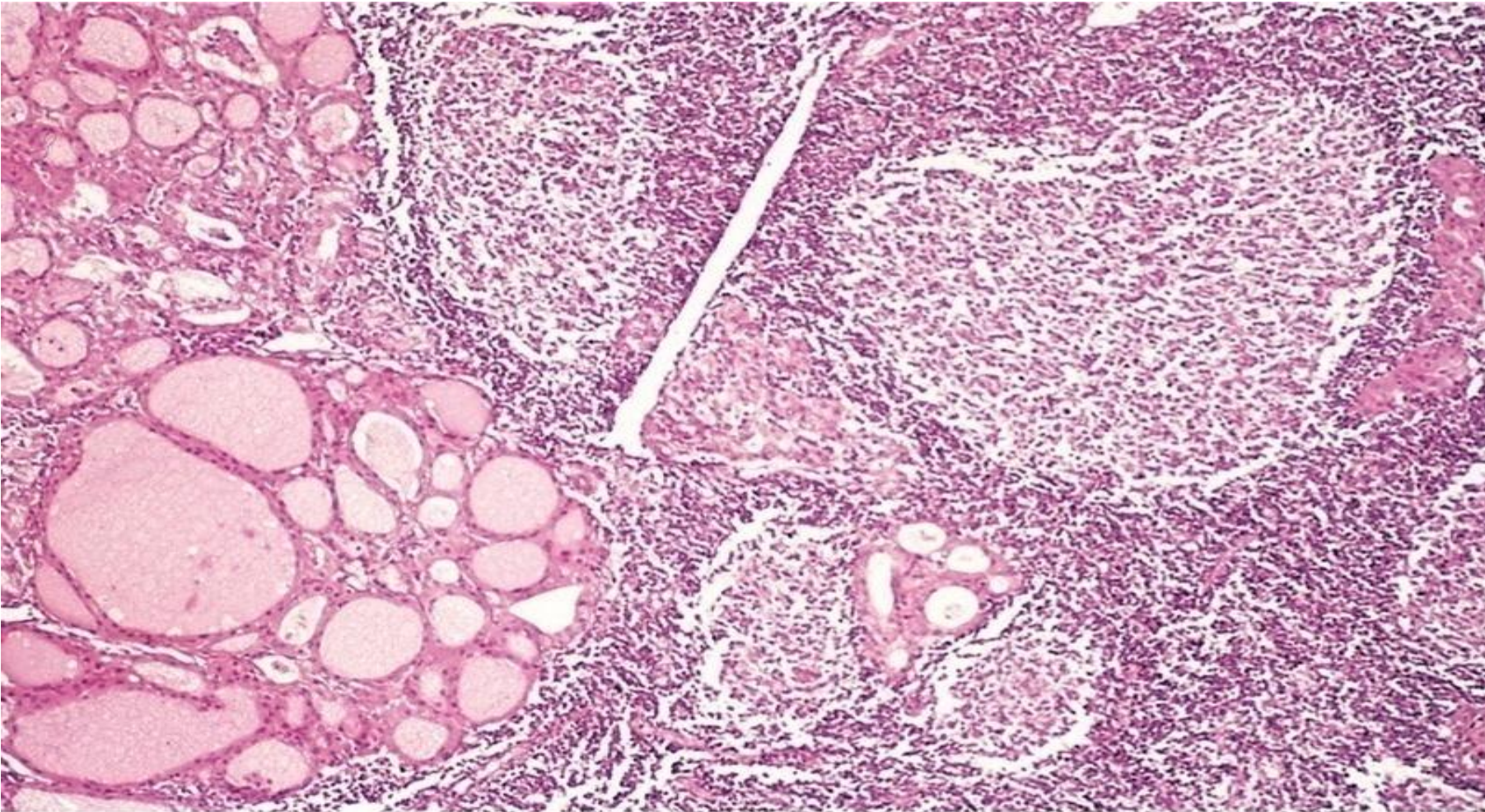
Dr H Awad

Pituitary adenoma: soft encapsulated nodule

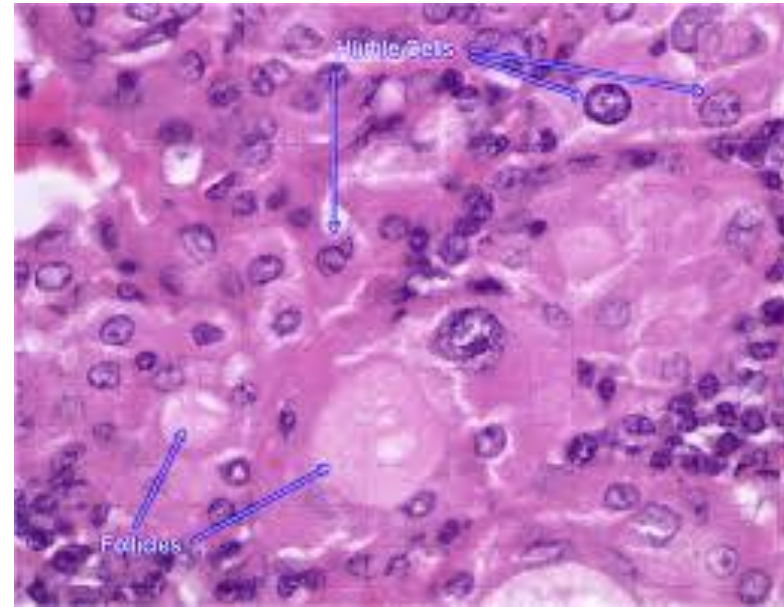
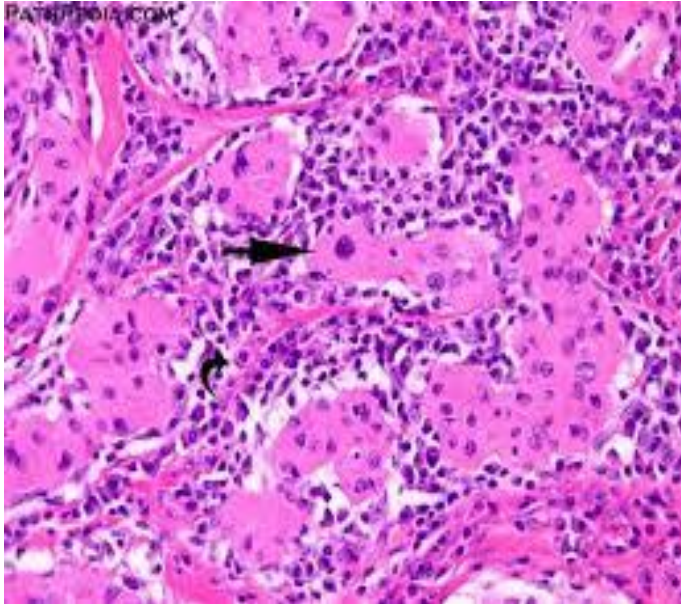


Kumar et al: Robbins Basic Pathology, 9e.
Copyright © 2013 by Saunders, an imprint of Elsevier Inc.

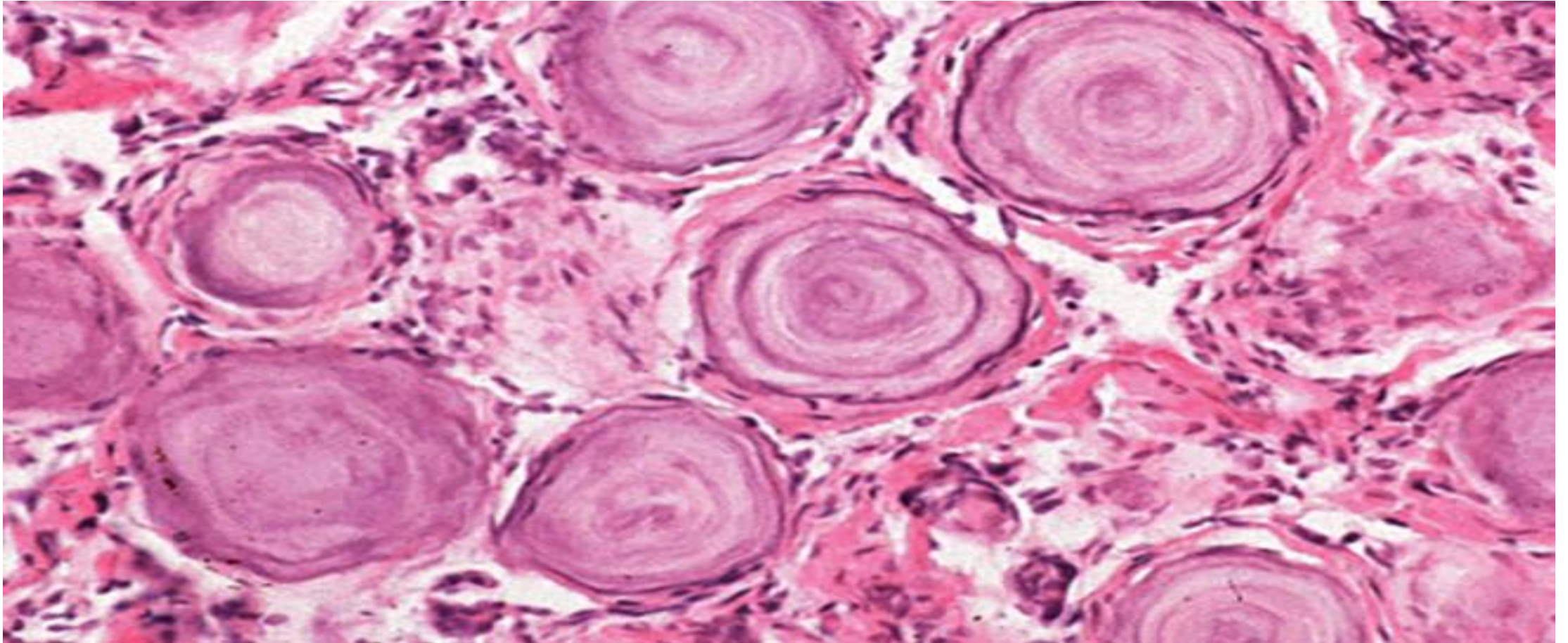
Hashimoto thyroiditis



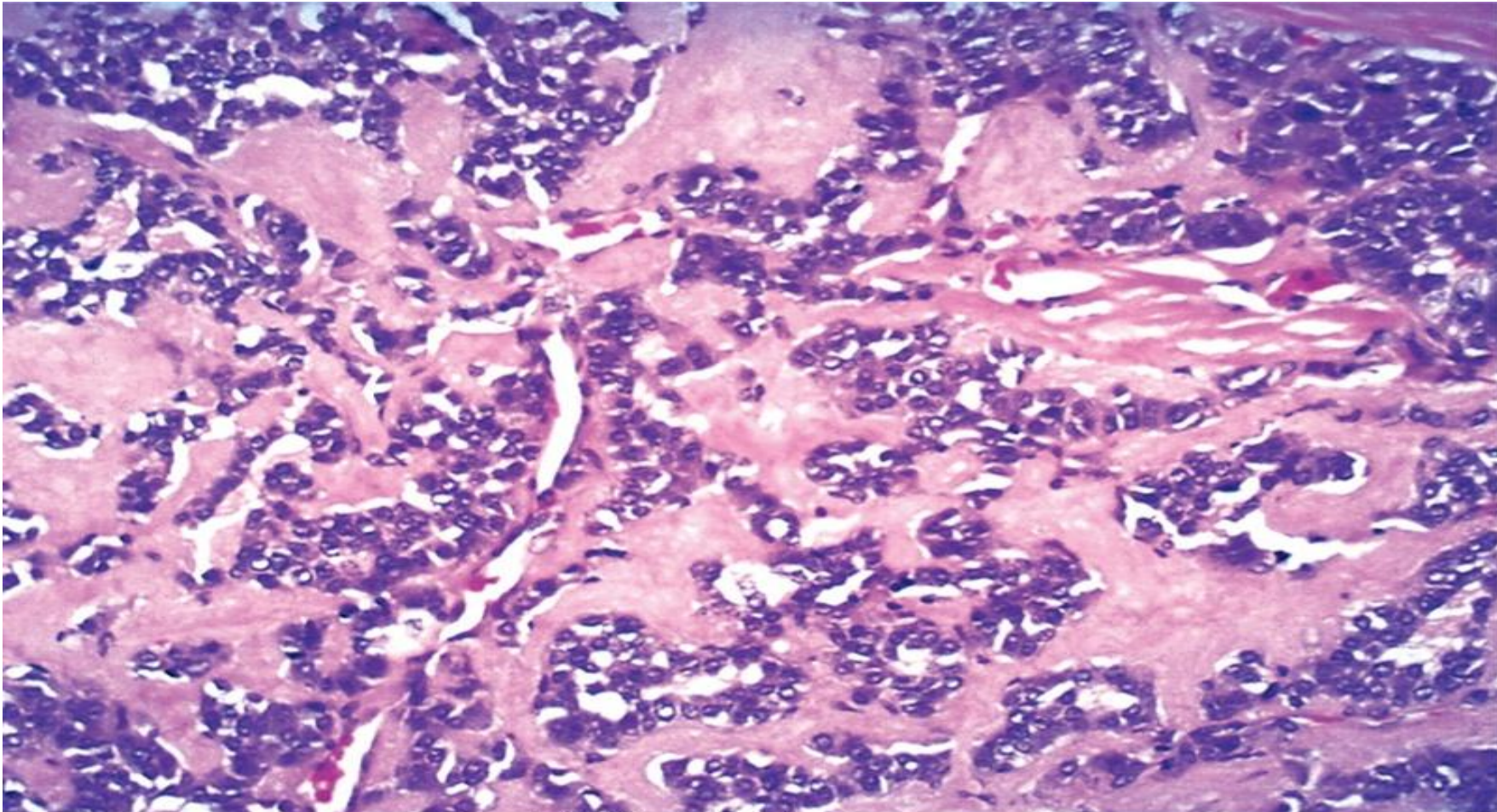
Hurthle cells: large cells with abundant eosinophilic cytoplasm, due to increased mitochondria... seen in Hashimoto



Psammoma bodies.. Seen in papillary thyroid carcinoma

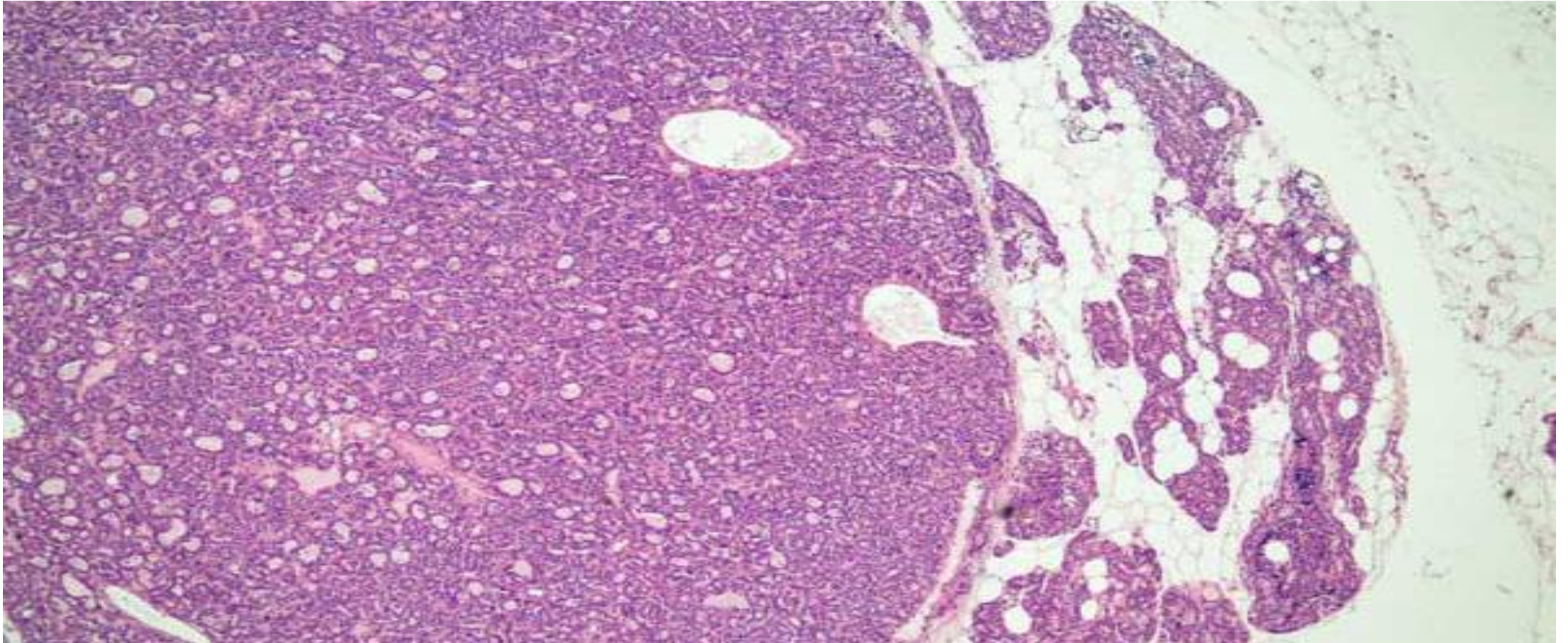


Medullary carcinoma

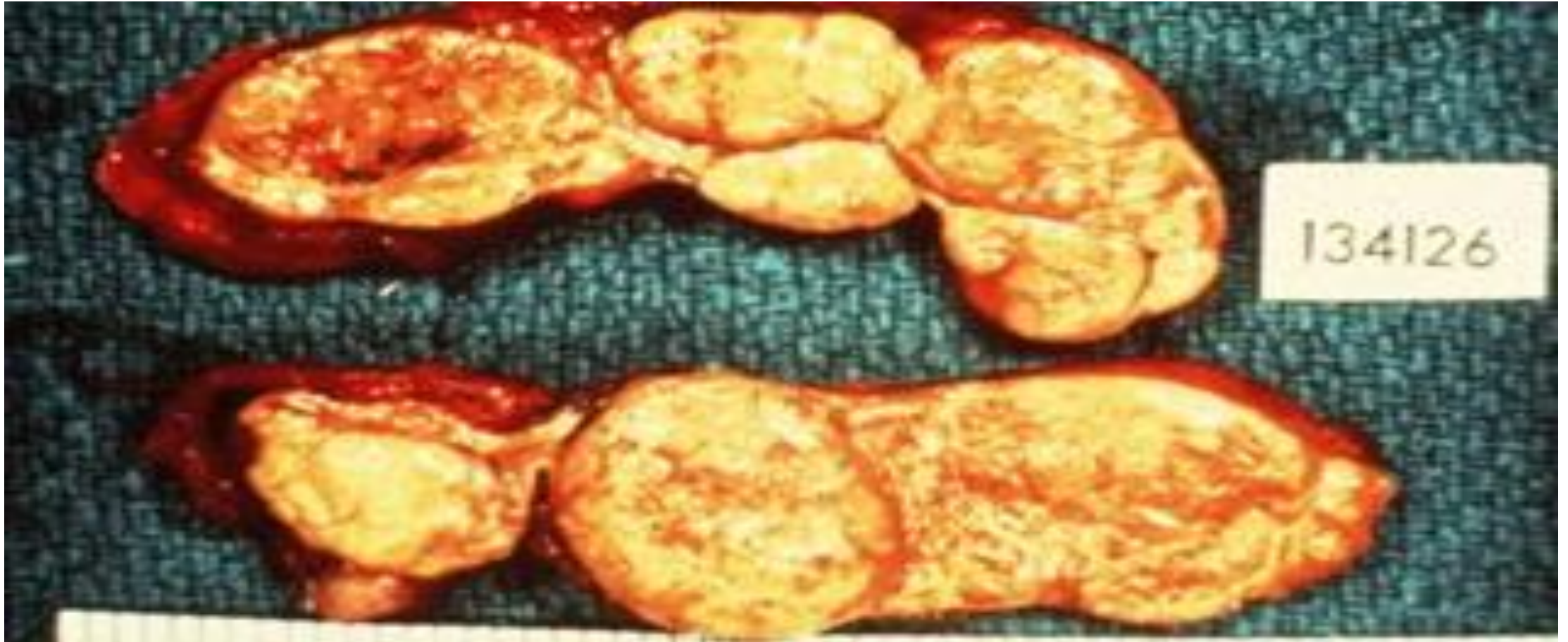


Kumar et al: Robbins Basic Pathology, 9e.
Copyright © 2013 by Saunders, an imprint of Elsevier Inc.

Parathyroid adenoma



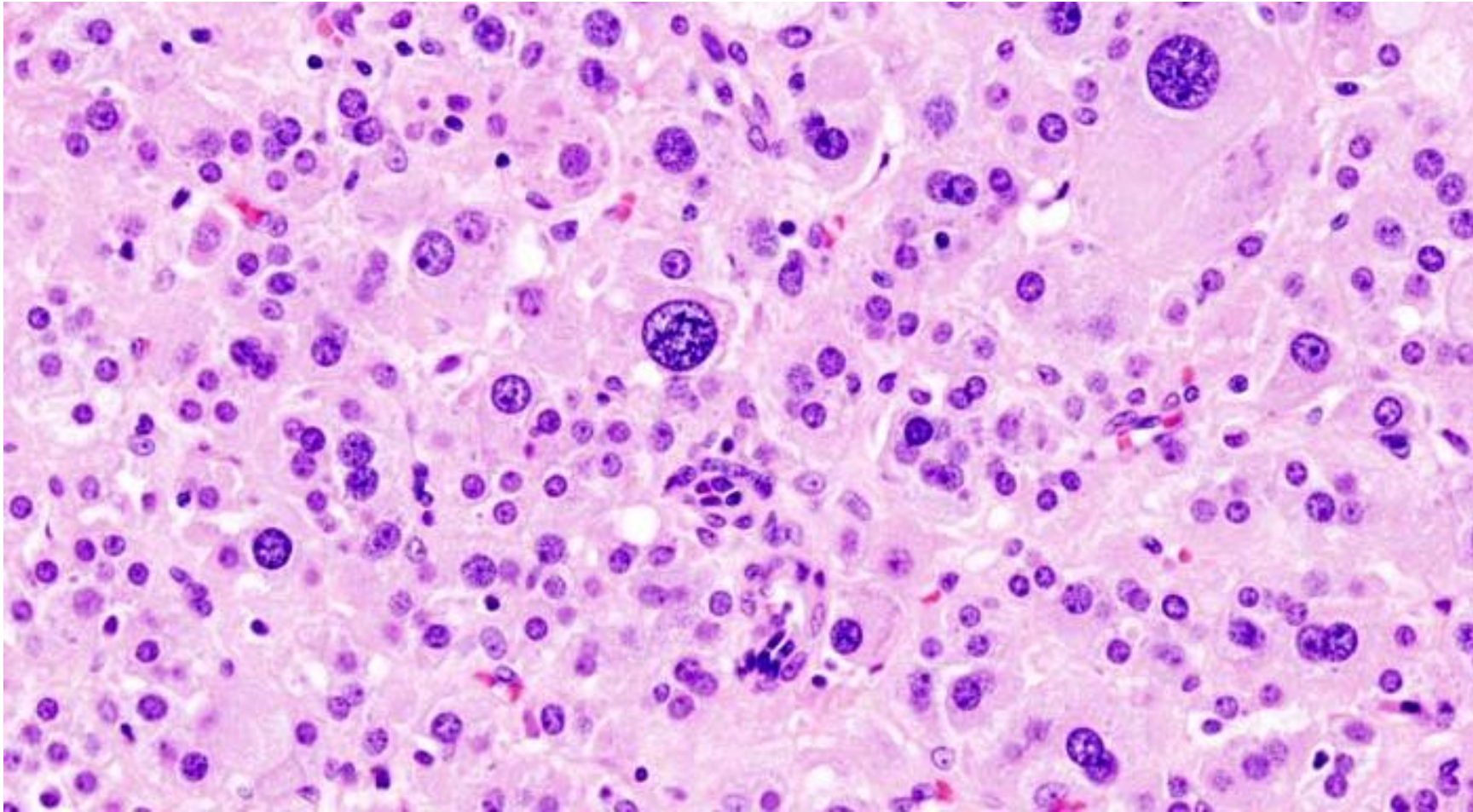
Nodular cortical hyperplasia



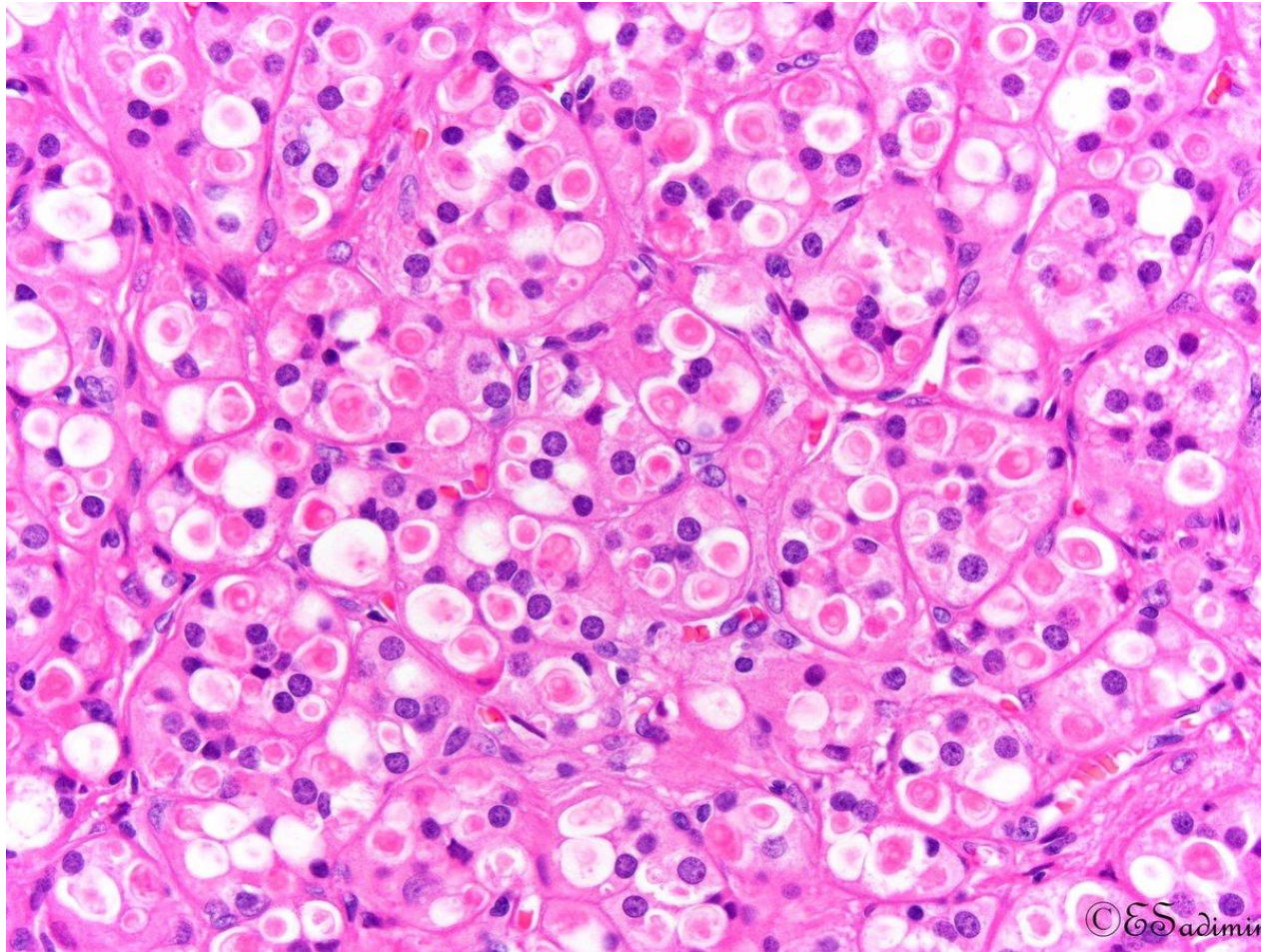
Adrenocortical adenoma



Adrenocortical adenoma/ note the endocrine atypia



Spironolactone bodies



Spironolactone bodies

